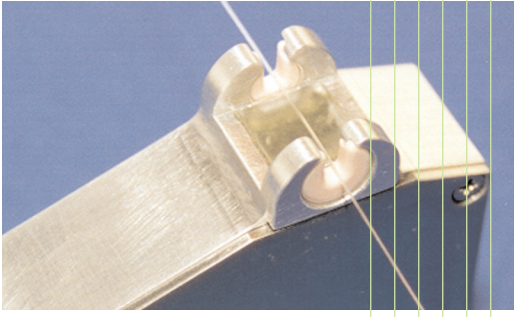
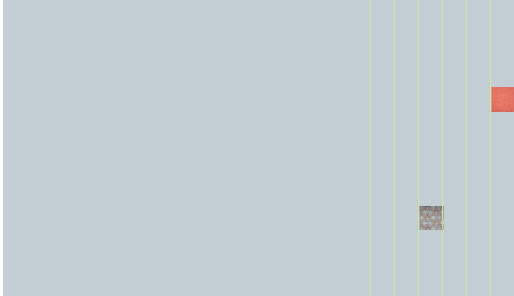


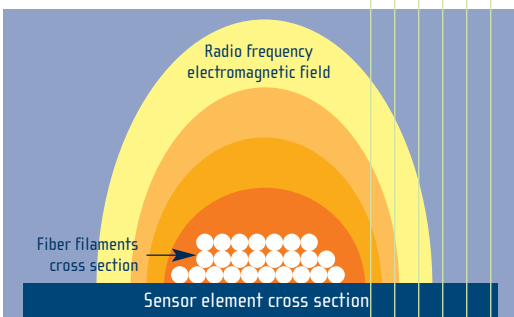
attalus fiber system technology

maximize manufacturing potential



Innovative Technology

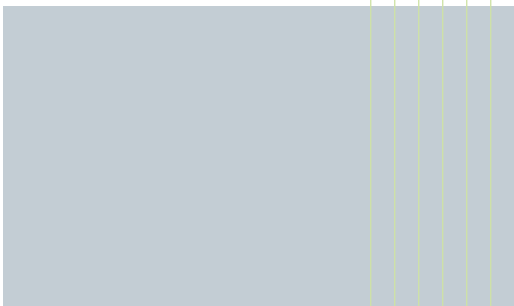
The Attalus Fiber System utilizes a unique and patented Radio Frequency Electromagnetic Technology. The sensor responds to the electrical properties of the fiber as it passes through the electromagnetic field. The multiple signals derived from the sensor allows the system to monitor product conditions such as denier uniformity and spin finish uniformity as well as process conditions such as winder performance.



Proven Systems

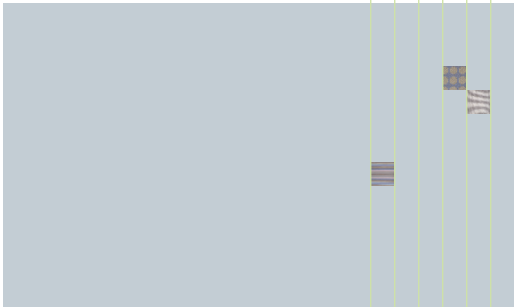
Information from the Attalus System has many benefits and has been installed in various polymer fiber sectors such as:

- Industrial yarn
- Carpet yarn
- DTY yarn
- Aramid yarn
- Textile yarn
- Elastomeric yarn

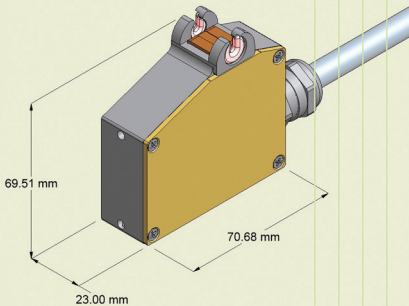


Full Service Support

INSTRUMAR has a full compliment of mechanical, software and systems engineers on staff. From bracket design, to data review, to software integration to a plant's information system, our resources have the fiber experience and skills to provide the end to end services to meet the needs of each customer.



Key Features



One Sensor Attalus is the only technology that measures several parameters with just one sensor thereby:

- Reducing the number of contact points
- Limiting tension drops
- Reducing space requirements for installation

Robust Design The Attalus sensor has been installed and proven in a number of harsh environments ranging from carpet yarns to industrial yarns to aramid yarns where the sensor is operated under high yarn tensions, high yarn speeds, with abrasive polymers.

Self Cleaning The Attalus Sensor uses the fiber to clean the sensor surface thus eliminating the need for cleaning alerts or regularly scheduled operator cleanings. Signal intensity for the Attalus Sensor is constant throughout the life of the sensor.

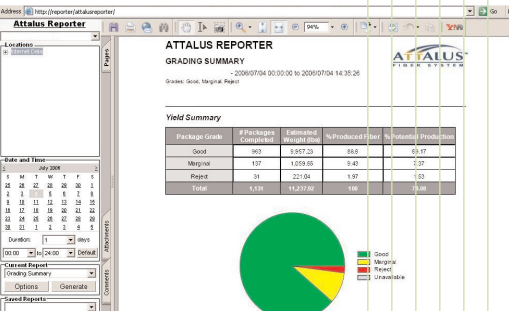
Customizable Faults The Attalus System comes equipped with operator enabled faults for events such as denier evenness, spin finish variation, and node count. At the same time, Custom Fingerprint Faults are also available to capture events unique to a manufacturer's process. These faults can be saved and reused for any given merge.

Grading In addition to fault setting, the Attalus System allows the user to set package grades such as first, second, and third. First can denote top grade. Second can denote a lower quality fiber. Third can denote a product that is scrap. The grades are displayed in real time as well as in history reports.

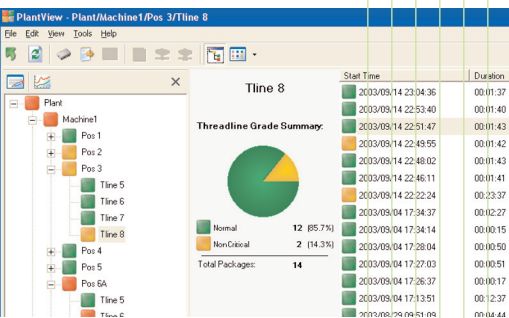
Actionable Alarms The Attalus System provides various ways to alert the operator of a real time process or product alarm so that the issue can be addressed immediately. These alarms include on screen alarms, positional LED alarms, or grades printed onto labels. Attalus alarms and grades can also be integrated into a plants existing information system.

Analytical Reports Customizable, time based production reports are available with the Attalus System. Production information can be filtered by fault type, grade, and package size. Report types include:

- Yield
- Exception (downgraded) Package Summaries
- Statistical Process Control Summaries
- Package Trend Summaries
- Machine Efficiency



Attalus Reporter provides customizable time based production reports



Attalus PlantView allows users to monitor, control and grade processes in real time

Specifications

Denier Range:	20-6000 dtex	
Spin Finish:	Oil and Emulsion style finishes	
Technology:	Patented Radio Frequency electromagnetic	
Capabilities:	Spin finish variation	Denier variation
	Missing and gained filaments	Thick and thin sections
	Slubs	Bulk variation
	Node count	Node quality
	Twist	Thread presence
Maintenance	Self cleaning	

How to Contact us:

Instrumar Limited
 PO Box 13246 Stn "A"
 39 Pippy Place
 St. John's, NL Canada
 A1B 4A5
 phone [709] 726-8460
 fax [709] 726-8613
 www.instrumar.com